

# FERROS MECÂNICOS

Ferros mecânicos, laminados e trefilados, 1020 e 1045.

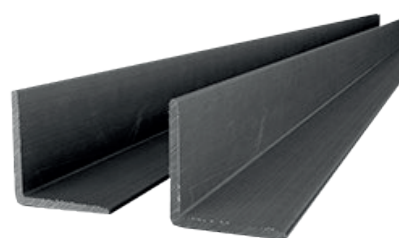
**SUPER AÇO**  
SUPERAÇO IND. E COM. LTDA



**FERRO REDONDO**



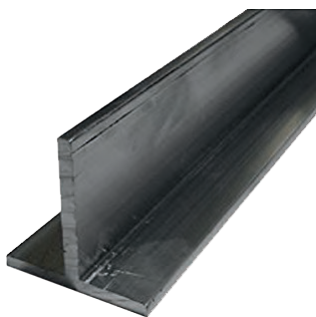
**FERRO QUADRADO**



**FERRO CANTONEIRA**



**FERRO CHATO**



**FERRO TEE**



**VIGAS**



**FERRO SEXTAVADO**



**TREFILADOS**